



LÖLSBERG



Operating and fitting instructions for
i.SpatulaShower spray rinsing devices for ice-cream scoops and spatulas
(Item Nos. 930001N, 930002N, 930003N)

All **i.SpatulaShower** spray rinsing devices and components have to be exclusively applied for cleaning purposes for ice-cream scoops and spatulas. Any other application is not appropriate.

Operating Instructions & Important Advices:



- The water valve is opened by pressing the ice-cream scoop/spatula onto the white activation disc. The ice-cream scoop/spatula is always rinsed with fresh water from the sides. Dirty washing water runs away immediately. On removing the ice-cream scoop/spatula from the activation disc the water valves are automatically closed again by the water pressure.
- **Let system run continuously for 1 minute at least once a day before starting operation and after finishing operation for the day!**
- **Rinse ice-cream scoop/spatula until only clean water runs down along the spray rinsing unit!**
- Do not use the overflow pipe during daily operation. Application of the overflow pipe only for cleaning purposes. **The water discharge holes are not allowed to stand in dirty water.** The tap-off section and straining disc can be removed to clean the rinsing device.
- **Clean/sanitize complete spray rinsing device at least once every day and disassemble spray rinsing unit in sufficient time intervals to clean/sanitize/decalcify it from inside and outside!**

Fitting Instructions & Important Advices:



- The i.SpatulaShower spray rinsing devices 930001N – 930002N 930003N are to be installed with adequate backflow protection to comply with applicable federal, state, and local codes!
- Check correct fitment of all threads and installation according to your local technical regulations and norms and make sure there are no leakages before using the system!
- Install a water pressure reducer (recommended water pressure +/- 2 bars resp. +/- 29 psi) and a water stop-cock!
- Ensure that all joints and seams in the splash zone are sealed and that brass parts are not exposed after installation!
- Close the water supply line during night and/or absence!
- Ensure at all times a free water drainage in order to avoid the water discharge nozzles (No. Y+Z) from being contaminated towards the inside!
- Clean/sanitize complete spray rinsing device at least once every day and disassemble spray rinsing unit (No. C) in sufficient time intervals to clean/sanitize/decalcify it from inside and outside!
- Let system run continuously for at least 3 minutes before starting first operation in order to clean the system before using!
- Let system run continuously for 1 minute at least once a day before starting operation and after finishing operation for the day!



930001N



930002N



930003N



LÖLSBERG

Scope Of Supplies:

1 x Fitting Instruction

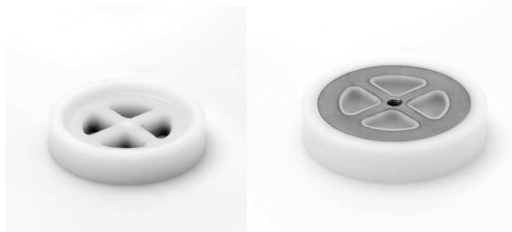
1 x Wall Attachment Holder 930903 (No. A) 1 x Rinsing Container/Pan 930908 (No. B)



1 x Spray Rinsing Unit 930001N (No. C)



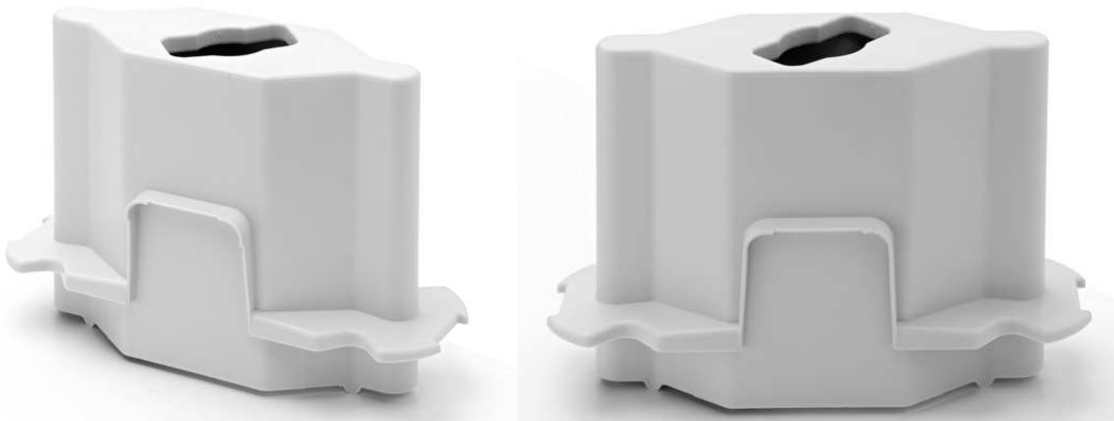
1 x Activation Disc 930980 (No. D)



1 x Mini Spanner 930981 (No. E)

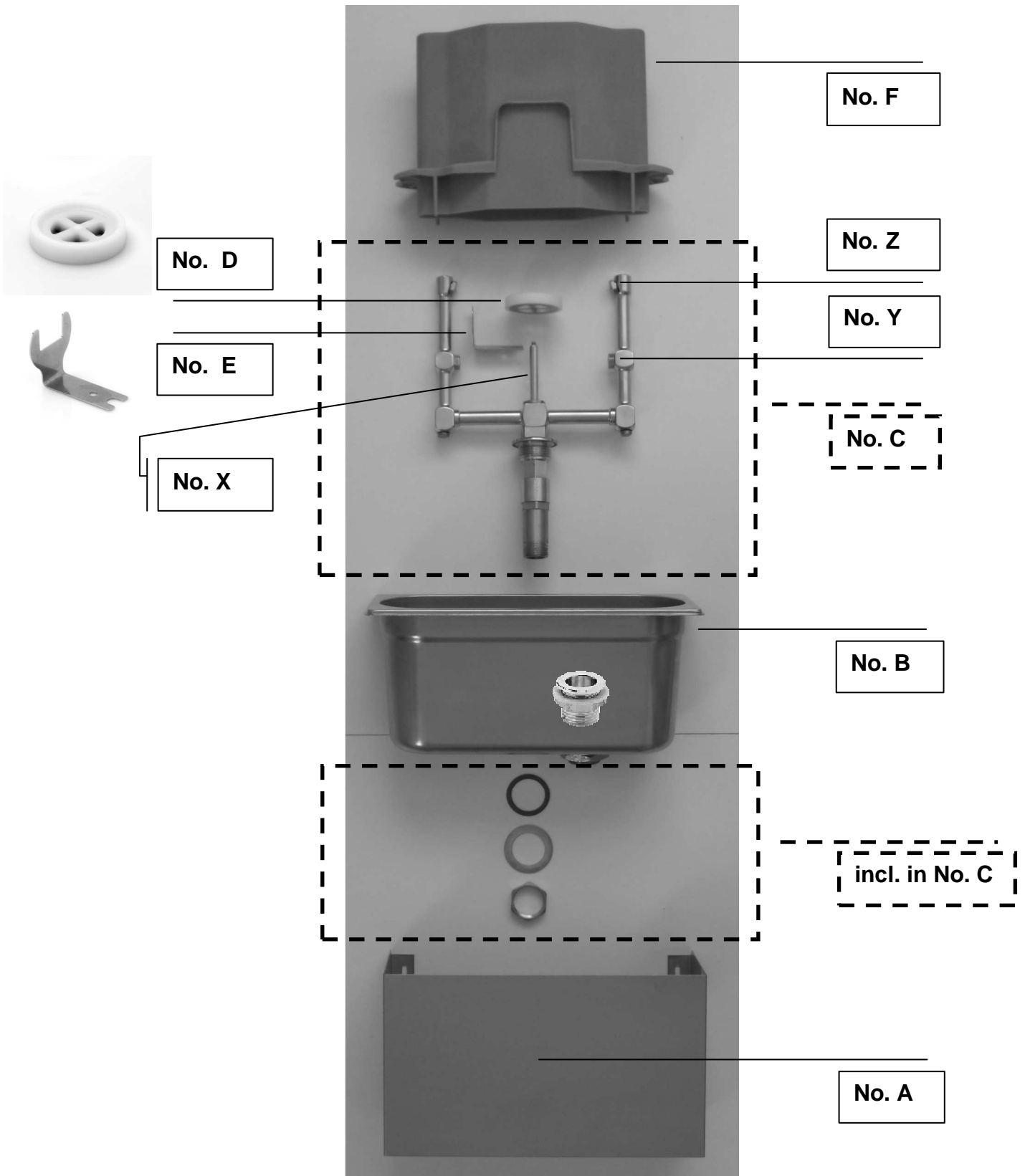


1 x Splash Cover 930909P (No. F)



LÖLSBERG

Fitting Instructions – Parts List

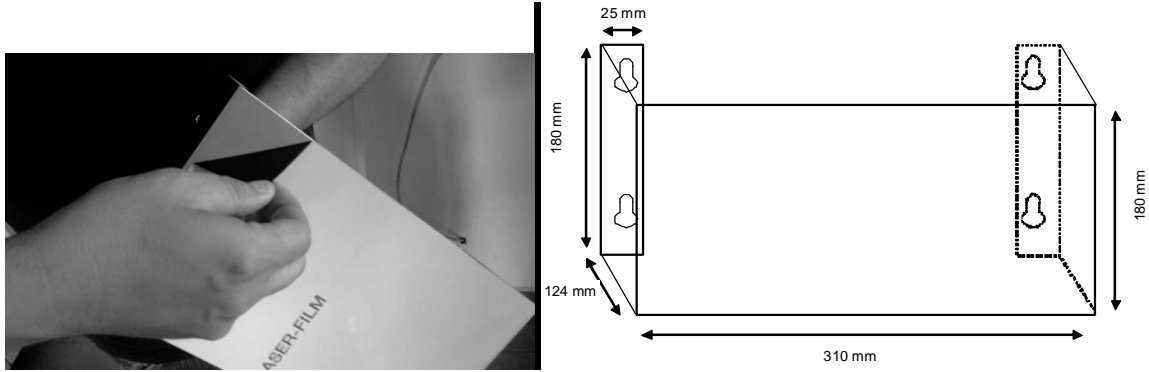


LÖLSBERG

Fitting Instructions – STEP 1 + 2

STEP 1 – Mount Wall Attachment Holder (No. A)

Remove the white protection foil from the wall attachment holder (No. A) and attach the holder to the work counter/ice cabinet/wall by using adequate screws.



No. A



STEP 2 – Put Water Drain Connector into the Rinsing Container/Pan (No. B)

Install the 1" water drain connector (No. B2) into the deep drawn hole of the rinsing container/pan (No. B1).



No. B1



No. B2

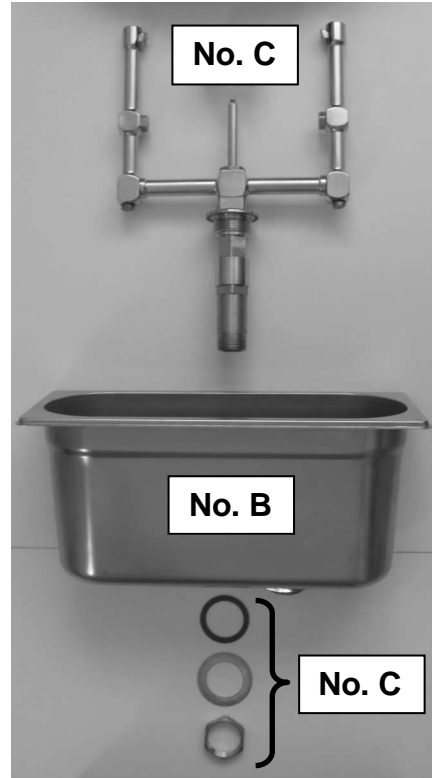


LÖLSBERG

Fitting Instructions – STEP 3 + 4

STEP 3 – Put Spray Rinsing Unit (No. C) into the Rinsing Container/Pan (No. B)

Fit the spray rinsing unit (No. C) through the flat center hole (approx. 21,5mm) inside the rinsing container/pan (No. B) by using the red paper gasket, metal washer and the screw nut (included in No. C).



STEP 4 – Put Assembled Device into the mounted Wall Attachment Holder

Put the assembled device into the wall attachment holder (No. A) mounted in STEP 1.



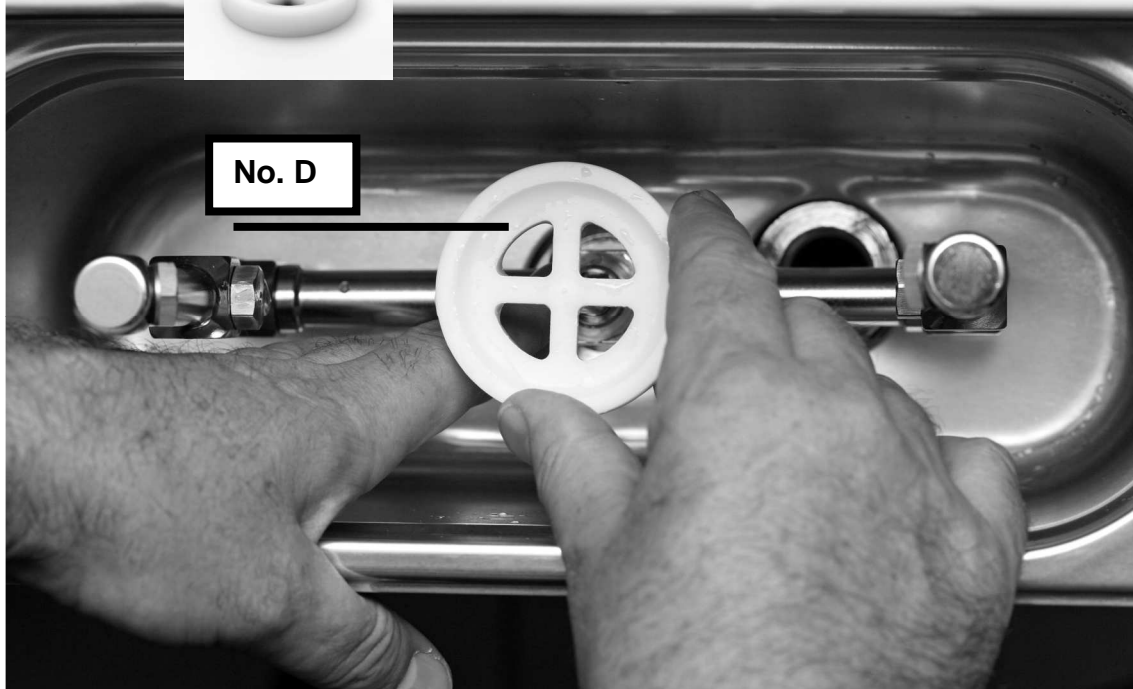
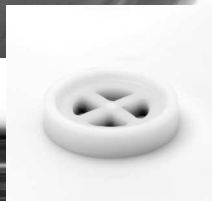
LÖLSBERG

Fitting Instructions – STEP 5.1

STEP 5.1 – Put Activation Disc (No. D) onto the Spray Rinsing Unit (No. C)...

Screw the activation disc (No. D) carefully onto the thread of the valve rod (No. X) of the spray rinsing unit (No. C).

Make sure that the threads of the activation disc (No. D) and the valve rod (No. X) don't get damaged!

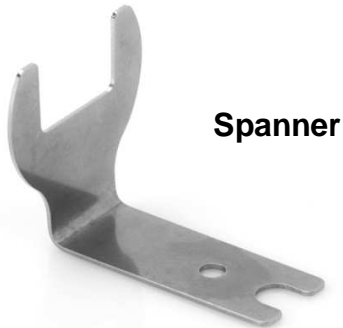


LÖLSBERG

Fitting Instructions – STEP 5.2

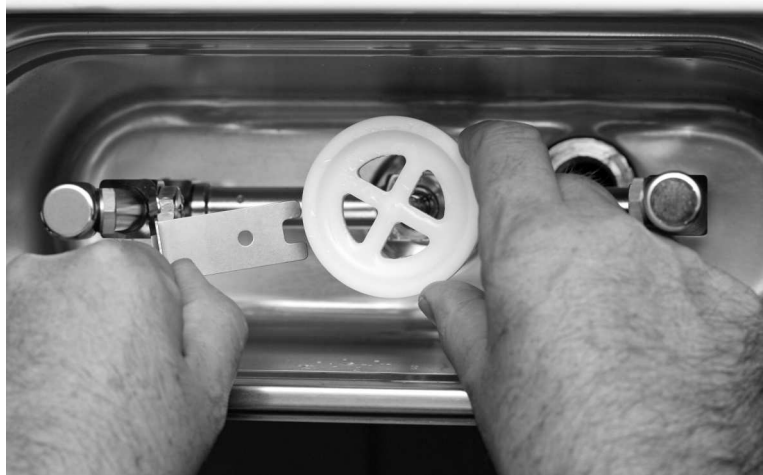
... STEP 5.2 - Fasten the Activation Disc (No. D) firmly by using the Spanner (No. E)

Fasten the activation disc (No. D) firmly by using the spanner (No. E).



Spanner

No. E



LÖLSBERG

Fitting Instructions – STEP 6

STEP 6 – Connection of Water Supply Line

The i.SpatulaShower spray rinsing devices



930001N
930002N
930003N



are to be installed with adequate backflow protection to comply with applicable federal, state, and local codes!

Ensure that all joints and seams in the splash zone are sealed after installation!

Ensure that brass parts are not exposed after installation!

Install a water pressure reducer (recommended water pressure +/- 2 bars resp. +/- 29 psi) and a water stop-cock!

Connect the pressure reducer to your water supply line/hose applying adequate sealing compounds/materials.

LÖLSBERG

Fitting Instructions – STEP 7 + 8

STEP 7 – Connection of Water Drain Line

Connect the 1” water drain connector (No. B2) fitted into the deep drawn hole of the rinsing container/pan (No. B1) in STEP 2 to your water drain line/hose applying adequate sealing compounds/materials.



STEP 8 – Put Splash Cover (No. F)

Put the splash cover (No. F) over the spray rinsing unit into the rinsing container (No. B).



STEP 9 – Use System

Press the ice-cream scoop/spatula onto the white activation disc. The ice-cream scoop/spatula is always rinsed with fresh water from the sides. Dirty washing water runs away immediately. On removing the ice-cream scoop/spatula from the activation disc the water valves are automatically closed again by the water pressure.

